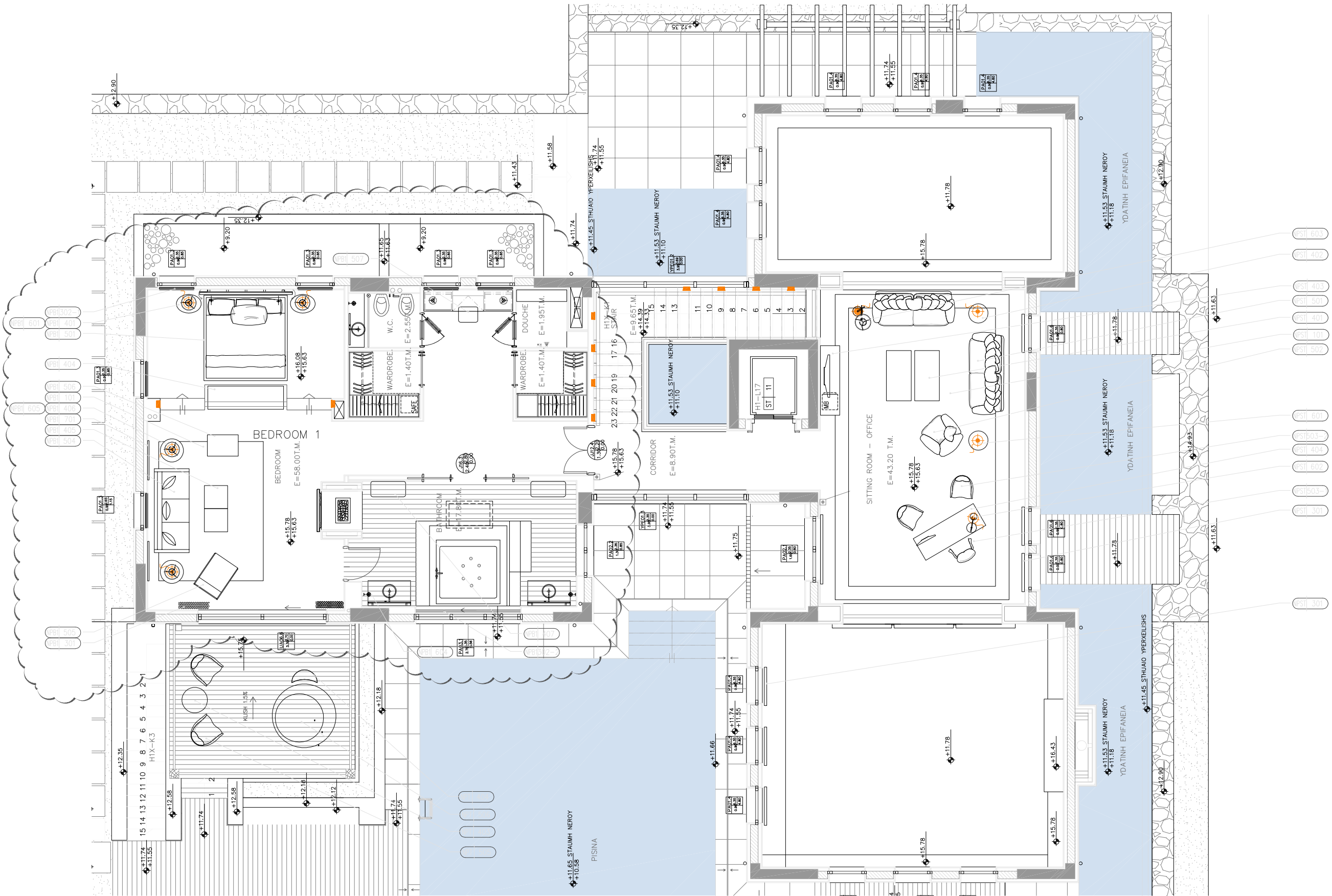


This drawing is for information only to be used by the contractors as a general arrangement of interior conditions. It has been made from available information, however measurements are to be verified on project site. This drawing must be verified and approved prior to final detailing and fabrication.
 This drawing is the property of MKV. It is only to be used for the project and site specifically identified herein and is not to be used on any other project. It is to be returned upon request.



NO	DATE	DESCRIPTION
3	06.02.09	UPDATED FF& E CODES
2	18.12.06	UPDATED ARCHITECTURE XREF
	08.10.06	ADDED UP DATED ARCHITECTS LAYOUT ADDED BALUSTRADE

REVISIONS
PROJECT NAME

NAVARINO
ROMANOS
NORTH_HOTEL

ISSUE
 ISSUED FOR REVIEW ONLY
 (NOT FOR CONSTRUCTION)
 ISSUED FOR CONSTRUCTION

SHEET TITLE
 PRESIDENTIAL SUITE
 FF&E LAYOUT
 FIRST FLOOR
 LEVEL 15.70

DRAWING NO.
PSN 01-02

SCALE 1/50 DRAWN BY

PROJECT NO 0327_SH CHECKED BY

MKV DESIGN Ltd
 INTERIOR ARCHITECTURAL DESIGN
 LONDON OFFICE
 29-31, High Street, London, WC2E 7TH, UK
 Tel: +44 (0)20 7322 2200 Fax: +44 (0)20 7322 2201
 Website: www.mkv-design.com
 Email: info@mkv-design.com