

VILLA ALBA

Nestled among ancient trees and lush gardens on a quiet hilltop, Alba enjoys breathtaking views over the Val d'Orcia Natural Park. This typical stone farmhouse has been transformed into a romantic refuge for up to six, complete with open kitchen, scenographic outdoor entertaining area, and separate guest house.





VILLA ALBA

DISTANCE FROM IL BORGO:

one kilometre

MAIN HOUSE

Mq 225.46 / Sq Ft 2426.831

Ground floor:

Living room with fireplace; dining room with kitchen area; powder room.

First floor:

Master bedroom with kingsize bed and ensuite bathroom; twin bedroom with single beds and ensuite bathroom.

GUEST HOUSE

Mq 36.52 / Sq Ft 393.098

Double bedroom with kingsize bed and ensuite bathroom; outdoor seating area.

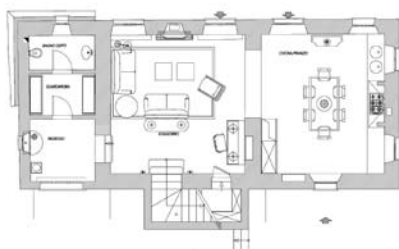
AMENITIES

Private outdoor heated swimming pool with bathroom; laundry area; LCD flatscreen TVs in living room and all bedrooms; broadband wi-fi internet connection; air conditioning; minibar; outside terrace with pergola-shaded seating and dining area.

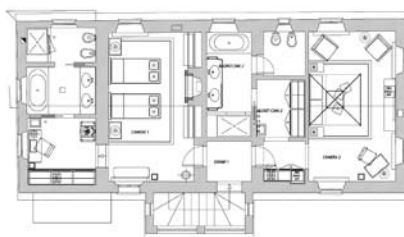
Sleeps six



GROUND FLOOR



FIRST FLOOR



GUEST HOUSE

