

VILLA CASTELLO

Next door to the Medieval castle ruins on a hillock that dominates Il Borgo, this warmly elegant Villa cocoons its guests in one of the estate's most intimate interiors. But it also offers a highly desirable panoramic pool and garden with 360-degree views over classic, timeless Tuscan landscapes.





VILLA CASTELLO

Located within easy walking distance of Il Borgo

MAIN HOUSE

Mq 353.25 / Sq Ft 3802.351

Ground floor:

Living room with authentic Tuscan fireplace;
dining area; kitchen; laundry; powder room.

First floor:

Double bedroom with authentic Tuscan fireplace,
king-size bed and ensuite bathroom; twin bedroom
with single beds and ensuite bathroom.

Second floor:

Master bedroom with king-size bed, walk-in closet
and ensuite bathroom.

AMENITIES

Private outdoor heated swimming pool with
bathroom; outdoor wood-fired pizza oven;
LCD flatscreen TVs in living room and all
bedrooms; broadband wi-fi internet connection;
air conditioning; minibar; outside pergola-shaded
terrace with seating and dining area; outside
panoramic seating area.

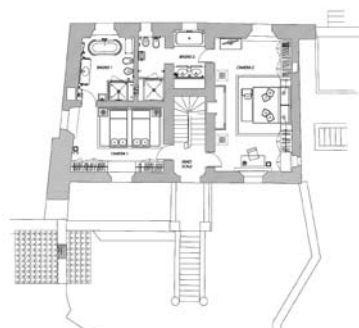
Sleeps six



GROUND FLOOR



FIRST FLOOR



SECOND FLOOR

