

WHERE LIFE MEETS LUXURY

Atlantis Super Suites, Suites & Rooms



ATLANTIS
THE PALM, DUBAI



Asateer

Helipad

Conference Facilities

The Royal Towers

The Lost Chambers Aquarium

The Avenues

The Palm
Monorail

Aquaventure Waterpark

Dolphin Bay



- Located on the apex of The Palm, Dubai and stretching across 4.6 hectares
- 1.4km pristine beach
- 35km from Dubai International Airport
- 12km from Emirates Golf Club
- 12km from Mall of the Emirates
- 11 million litre marine habitat of The Lost Chambers Aquarium
- Aquaventure, largest waterpark in Dubai
- 20 bars and restaurants

It's Another World

Where special moments become lifetime memories

Situated on the top of man-made Palm Island; Atlantis, The Palm has quickly become an icon of Dubai and 'must-see' destination. Inspired by the ocean and its wondrous marine life, everything about Atlantis is larger than life. Designed to exhilarate and destined to impress huge gilded doors open to reveal a world of imagination where experiences become precious life long memories.

Atlantis was inspired by the idea of offering our guests the greatest holiday experience they will ever have. Where people of all ages and cultures, can reconnect in a fantastical world of splendour, exhilaration and discovery.

For those who like to unwind and soak up the sun our 1.4km beach is just the place. Alternatively, guests can relax beside either our Zero Entry child friendly pool or The Royal Pool. All locations offer breath-taking views across The Palm and Dubai skyline.

For those who like to be a bit more active, Aquaventure Waterpark and The Lost Chambers Aquarium are the perfect ways to spend some holiday time. Guests staying in Atlantis benefit from unlimited complimentary access to both attractions - one of the main reasons thousands of people from around the world choose Atlantis as their holiday destination.



The Grand Lobby





Atlantis The Palm, Dubai

Super Suites in Atlantis

The jewels in the Atlantis crown

Our 7 Super Suites are the jewels in our crown complete with a dedicated butler to look after our guests every need. Each suite offers its own distinctive take on luxury and opulence. Guests can choose between the far reaching views offered by our Grand Atlantis Suites which sit at the top of each of the Royal Towers or the lavishly appointed Presidential Suites. Alternatively they can submerge themselves in our Underwater Suites – truly a unique experience where the bedroom and bathroom look into the mesmerising Ambassador Lagoon. The ultimate stay is of course our Royal Bridge Suite, literally the pinnacle of the resort and the most exclusive of our luxurious Super Suites. One of a kind it spans the arch which links the Royal Towers and offers unparalleled views of Palm Island, Dubai and the Arabian Sea from on high.

- Royal Bridge Suite
924sqm (9,946sq ft)
- Grand Atlantis Suite
429sqm (4,617sq ft)
- Underwater Suite
165sqm (1,776sq ft)
- Presidential Suite
220sqm (2,368sq ft)
- Complimentary airport pick up
from Dubai International Airport
- 2 complimentary Dolphin
Encounters
- Complimentary breakfast
- Imperial Club Lounge access
including snacks and pre-
dinner cocktails and canapes
- Complimentary access to
Atlantis Kids Club
- Complimentary use of Steam,
Sauna and Jet Pool facilities at
ShuiQi Spa & Fitness
- Complimentary private Pool
Cabanas



Presidential Suite Dining Room



Royal Bridge Suite Bedroom



Grand Atlantis Suite Bathroom



Underwater Suite Bedroom

- 924sqm (9,946sq ft)
- 24-hour butler service and private elevator access
- Dining room seats 16
- Master Bedroom with his and hers en-suite bathrooms
- 2 further guest rooms both with en-suite bathrooms
- Plush lounge and media room
- 2 chefs, 24 hours
- Deluxe rooms available on the same floor

Royal Bridge Suite

At 924 square metres the Royal Bridge Suite is truly palatial. One-of-a-kind it majestically spans the arch which links the Royal Towers offering un-paralleled 180 degree views of Palm Island and the Arabian Sea.

The Royal Bridge Suite is the only choice for guests seeking the ultimate in privacy and luxury. It has its own guarded entrance and elevator along with a dedicated team of people from Butlers to Chefs on hand to ensure that our Royal Bridge Suite guests every need is fulfilled.

The décor is exquisite and opulent reflecting the stature of the suite. With 3 sumptuous bedrooms, a grand living room, a dining room which seats 16, a majilis and two spacious terraces The Royal Bridge Suite offers an amazing haven in which to relax or entertain.



The Royal Bridge Suite Bedroom



The Royal Bridge Suite Balcony



The Royal Bridge Suite



The Royal Bridge Suite Living Room

Grand Atlantis Suites

- 429sqm (4,617sq ft)
- 246sqm Balcony with views of the Palm Island and Arabian Sea
- Grand lobby
- Luxurious en-suite his and hers bathroom with jetted tubs
- Dining area for 10
- 24-hour butler service

Our Grand Atlantis Suites form the dramatic crowing glory of the Royal Towers and command breathtaking views over Palm Island and the Arabian Sea from a spectacular sun terrace which spans three sides of the suite.

The entire suite is decorated in elegant gold tones which exude luxury and opulence. The lavish living space includes a master bedroom complete with his and hers bathrooms, a guest bedroom with an ensuite bathroom, a living room with a dining table for 10 and a separate office.

Grand by name and grand by nature, this Suite is guaranteed to impress.



Grand Atlantis Suite Balcony



Grand Atlantis Suite Bedroom



Grand Atlantis Suite Balcony



Grand Atlantis Suite Bathroom

- Lavish in style
- 3 floors with sweeping staircase
- Dining area for 6
- 24-hour butler service
- Floor-to-ceiling windows from the Master Bedroom into The Ambassador Lagoon offering unique views

Underwater Suites

Our two Underwater Suites; Poseidon and Neptune, are perhaps our most intimate and romantic suites where guests descend into the perfect hide-away.

Elegant aquatic-themed accommodation includes a large living area complete with dining table, a separate majlis/ TV room a beautifully appointed bedroom and en-suite bathroom.

However it is the view from the bedroom and bathroom that makes this suite so very special. With floor to ceiling windows into Ambassador Lagoon, guests are quite simply mesmerised by the dramatic ancient ruins of the mythical lost city and its 65,000 marine inhabitants. This is the ultimate romantic getaway





Underwater Suite Living Room

- 220sqm (2,368sq ft)
- 22 sqm Balcony with views of the Palm Island
- Sun loungers, table and chairs for al fresco dining
- Luxurious en-suite his and hers bathroom with jetted tubs
- Dining area for 8
- 24-hour butler service

Presidential Suites

Our two Presidential Suites offer the perfect balance of luxury and comfort. Situated on the upper floors of the Royal Towers one offers views of Palm Island the other the Arabian Sea.

With a large living area including a dining table for 10 and an interconnecting room the Presidential Suite is an ideal option for larger families.



Presidential Suite Dining Room



Presidential Suite Dining Room

Suites in Atlantis

Splendid accommodation

Our suites offer an additional level of benefits, privacy, comfort and service. All our suites have a separate living area and balcony giving more space to relax or entertain. An interconnecting room (separate charge) gives the flexibility of adding an additional bedroom, perfect for larger families and groups travelling together. There are three Suite categories to choose from Terrace, Executive and Regal.

- Terrace Suite
94sqm (1,014sq ft)
- Executive Suite
101sqm (1,087sq ft)
- Regal Suite
164sqm (1,016sq ft)
- All three suite options are available on the Imperial Club floors
- Breakfast for 2 adults and up to 2 children under 12
- Complimentary internet access
- One complimentary day access to Kids Club between 2pm and 6pm for children between 3 and 12 years
- 100% of suites are interconnecting to a double queen room which needs to be booked as a separate unit

- **Terrace Suites** : Aptly named as they offer guests larger than average balconies complete with sun loungers and a dining table making it the ideal location to sunbathe or dine al fresco in private.
- **Executive Suite:** Executive Suites offer our guests the perfect balance of comfort and space.
- **Regal Suites:** At 164 metres our Regal Suites are much larger than the average 1 bedroom suite. With large balconies and stunning views across Palm Island and the Dubai skyline or the Arabian Sea they provide the perfect place to relax.



Terrace Suite Living Room



Executive Suite Bedroom



Regal Suite Dining Area



Regal Suite Bedroom

- 1,539 Guest Rooms - all with either Arabian Sea, or Palm views including:
 - Deluxe
 - Ocean Deluxe
 - Palm Beach Deluxe
 - Imperial Club
 - Imperial Club Suites
 - Terrace Suites
 - Executive Suites
 - Regal Suites
 - Underwater Suites (Poseidon/Neptune)
 - Presidential Suites
 - Grand Atlantis Suites
 - Royal Bridge Suite
- Hospitality Lounge open to all guests prior to check-in and after check-out
- King Room
45sqm (476sq ft)
- Double Queen Room
47sqm (502sq ft)

Rooms in Atlantis

The ultimate resort

Atlantis, The Palm boasts 1,539 spacious guest rooms including 166 suites all accommodated within the Royal Towers. Each room is designed with subtle oceanic and Arabic influences, complete with spectacular views of the azure waters of the Arabian Sea or The Palm and magnificent Dubai skyline. 90% of our rooms are interconnecting.

All our guest rooms are beautifully appointed and offer the comfort expected of a 5 star resort. Guests can choose from one of three room types; Deluxe, Ocean Deluxe and Palm Beach Deluxe each offering a different view. Guests can give a preference for either a King size or 2 Queen size beds, this is subject to availability at the time of check in.

- **Deluxe Rooms:** Deluxe rooms offer partial views of the Arabian Sea or Palm Island.
- **Ocean Deluxe Rooms:** Ocean Deluxe rooms enjoy breathtaking views of the Arabian Sea.
- **Palm Beach Deluxe Rooms:** Palm Beach Deluxe Rooms take advantage of the Atlantis, The Palm's prime location and benefit from a unique view over the beach and across Palm Island and the Dubai Skyline.



Ocean Deluxe King Bathroom



Deluxe King Room



Hospitality Lounge



Palm Beach Deluxe Queen Room

- VIP check-in in the Royal Majlis
- Check - out in the Imperial Club Lounge
- Complimentary full hot breakfast
- Complimentary snacks, afternoon tea and pre-dinner cocktails and canapés
- Complimentary internet access
- Complimentary access to Kids Club between 10am and 6pm for children between 3 and 12 years
- Complimentary use of Steam, Sauna and Jet Pool facilities at ShuiQi Spa & Fitness
- Special rates for Pool Cabanas

Imperial Club in Atlantis

The perfect choice for extra benefits and value

Imperial Club is the perfect choice for guests seeking additional luxury, comfort and convenience.

What makes Imperial Club really special is all the added value benefits. These include exclusive access to the Imperial Club lounge, complimentary full hot breakfast, all day snacks, afternoon tea and pre-dinner cocktails and canapés not to mention a book and video library and complimentary international newspapers in the lounge. Families with children between the ages of 3 and 12 years will also benefit from daily complimentary access to Kids Club between 10am - 6pm and a play area in the lounge itself.



Imperial Club Bedroom



Imperial Club



Imperial Club Suite



Dining at Atlantis

Delicious discoveries

Atlantis, The Palm has become a culinary destination from family dining to fine dining. Our 20 bars and restaurants each offer distinct and different flavours and themes for our global guests. From globally acclaimed chefs such as Nobu Matsuhisa and Giorgio Locatelli, to the bold, contemporary setting of Saffron, an Asian inspired buffet style restaurant serving over 220 different dishes to Levantine, an authentic Lebanese dining experience with a panoramic show kitchen and traditional entertainment including a belly dancer and Shisha, there is something to suit every taste.

Extraordinary Events

Banquets, conferences, weddings and events

Key to Atlantis, The Palm is our Conference and Exhibition Centre, which offers a unique choice of indoor and outdoor venues catering for intimate wedding ceremonies to large corporate groups. Literally anything is possible, the only limitation is imagination.

Our teams of event organisers will work closely with the planner or guest to cover the finest of detail and to ensure that what ever is arranged exceeds all expectations

The Avenues

Perfect for retail therapy

Guests at Atlantis need not go to the world's fashion capitals to shop in the finest luxury brand stores. From the latest fashion labels to luxury jewelry the shopping is second to none; brands include Tiffany & Co, Lacoste, Levant and Porsche Design to name just a few.

With boutiques selling a range of products including designer label fashions, beach attire, one-of-a-kind creations, cosmetics and children's clothing and toys guests are spoilt for choice. Souvenir shops around the resort ensure guest can find trinkets and memorabilia to take home.

ShuiQi Spa & Fitness

A world of tranquility and rejuvenation

ShuiQi Spa and Fitness is a tranquil place of serenity, opulence and pure indulgence, the perfect place to rejuvenate.

Set over two floors within the Royal Towers of Atlantis, the Spa provides a sublime range of treatments, bathing options, traditional and water therapies. With his and her separate areas, every guest can find the ideal treatment or therapy.

Our state-of-the-art fitness centre and highly skilled personal trainers ensure guests can enjoy the extravagances of the resort whilst maintaining their fitness regimes.



Ossiano



The Avenues



Atlantis Spa

Aquaventure Waterpark

Non stop water, non-stop fun

Aquaventure Waterpark is the ultimate fun day out for the entire family overflowing with 42 fun-filled acres of uphill water slides, rivers, rapids and a 700 metre beach. For the true thrill seeker our signature 27.m near vertical speed slide, The Leap of Faith guarantees to get the adrenalin pumping.

For our younger guests Splashers is the perfect playground with climbing frames, waterslides, rope bridges, water jets and a giant tipping water bucket.

Unique to Aquaventure is that it has its very own beach where guests can unwind and soak up the rays.

With restaurants and refreshment kiosks throughout the park and so much to do it is easy to while away a whole day.

Guests staying at Atlantis have unlimited complimentary access. We also welcome guests to come for the day, there is no need to book.

The Lost Chambers Aquarium

An amazing underwater world

The Lost Chambers Aquarium lies at the heart of the property and creates a mystical experience for guests with over 20 marine exhibits and over 65,000 marine animals. Free for our guests there is always something new to discover.

Marine Animal Adventures

Meet our , Sharks, Sting Rays and more

Our Ray Feeding experience gives guests a hands-on encounter with our resident Cownose stingrays or for real exhilaration guests can snorkel with the sharks in Shark Lagoon. Our Behind the Scenes Tours offer guests the opportunity to visit our back-of-house facilities to view how we care for our marine animals.

Guests can become intrepid explorers with our Shark Safari and experience how it feels to breathe underwater. Using a special helmet the Safari takes place at the bottom of Shark Lagoon where guests will enjoy the thrill of being surrounded by sharks, rays and hundreds of colourful fish as they walk around. No pre training is require anyone over 8 can participate

Dolphin Bay

Get up close and personal with our Dolphins

Boasting one of the world's most sophisticated dolphin habitats in the world, swimming with our dolphins is a truly memorable life experience. Guests can choose from one of 5 interactions suitable for all ages and swimming abilities, an amazing opportunity to interact with these charismatic creatures. Our Marine Mammal Specialist guide guests as they experience the enigma that dolphins are.



Kids and Teens at Atlantis

It really is a kid's world

There may be no resort in the world better suited to a child's love of discovery than Atlantis,

Kids Club is designed specifically for children up to age 12, where every day is a new and exciting adventure with non-stop action through arts and crafts projects, climbing walls, underwater theatres and video gaming rooms.

Club Rush offers teens from 13-18 an exclusive parent-free hangout. A supervised club with the latest in digital gaming, a state-of-the-art dance club with DJ booth, an alcohol-free bar that serves 'mocktails' and themed events running throughout the afternoon and evening, it is the perfect 'chill out' zone for a teenager!

Diving in Atlantis

Discover an underwater world

Diving is yet another pastime at Atlantis. Whether guests are total novices or accomplished divers, they can enjoy a range of diving adventures at our Padi certified Dive Centre; from Discover Scuba to certification courses and diving expeditions. We also offer courses for children including Bubblemaker and PADI Seal Team.

Leisure Activities

Endless hours of fun

Atlantis is synonymous with water so as you would expect there are endless ways for guests to enjoy the Arabian Sea. There are a wide range of watersports available including kayaks, pedal boats and sailing. Alternatively, guests can charter luxury yachts let someone else do the work and just sit back relax and enjoy the Dubai coastline.

For those who prefer to spend at least some of their time on land there is a whole host of options. Guests can enjoy Heli tours of the city from our very own helipad, or alternatively we have three hard-surfaced tennis courts, which are floodlit for night play for those who like to beat the heat. A running track and fully equipped state of the art fitness centre ensure that fitness regimes can be maintained even on holiday.

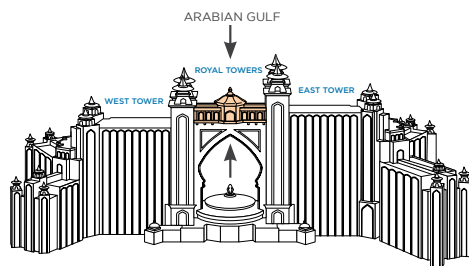
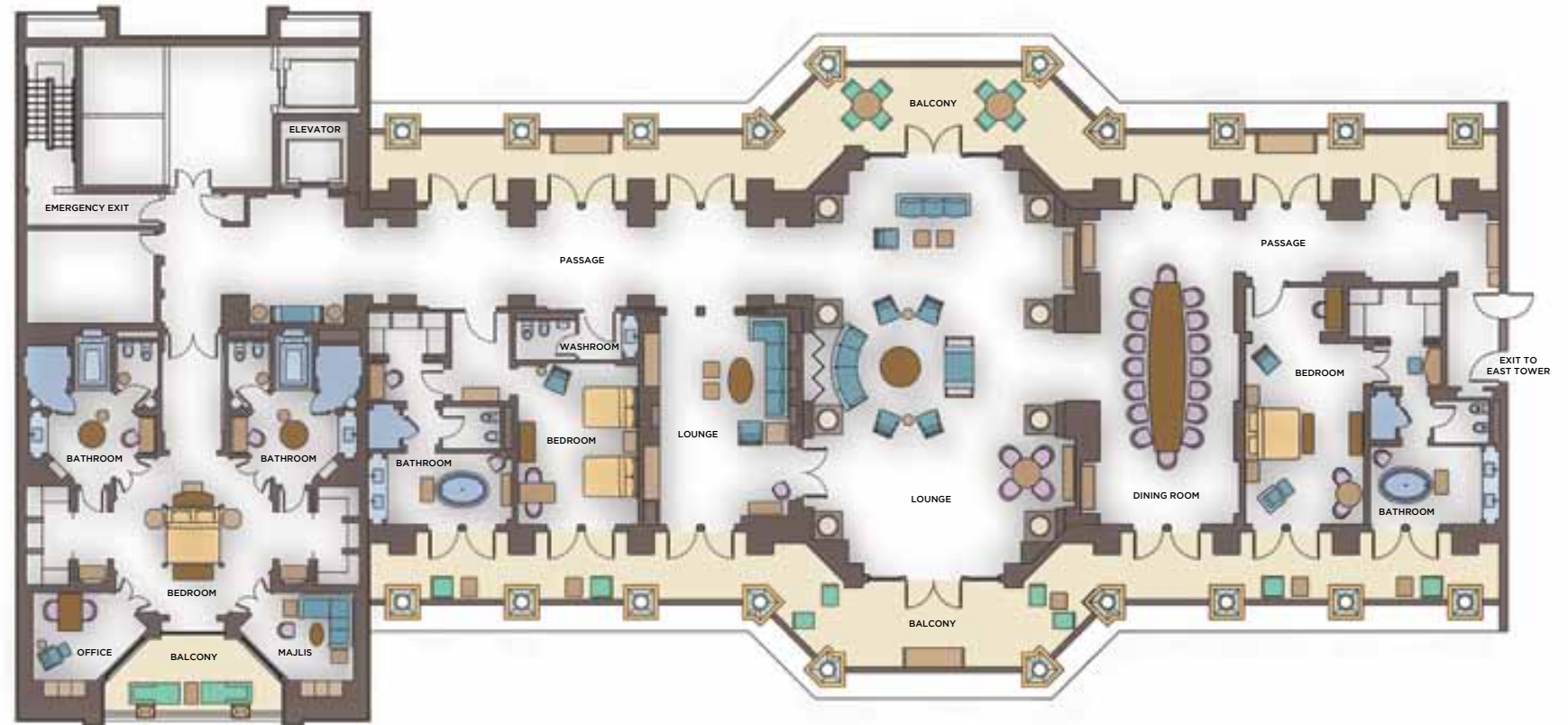


Royal Bridge Suite (924sqm)

At a Glance

- One Royal Bridge Suite
- Floor-to-ceiling views of Palm Island and Arabian Gulf from every window
- Interlinks the two Royal Towers
- Private elevator
- Bar set up prior to arrival as per guests requests
- Private chef
- Fully equipped kitchen
- Gold Leaf dining table seating 16
- In room dining, plated and buffet service available
- Two 24-hour dedicated butlers
- Library/media centre
- Master bedroom
- Luxurious en-suite his and hers bathrooms with jetted tubs
- Three bedroom suites all with en-suite bathrooms
- Large living room
- Option to book out 22nd floor
- Part of the seven Super Suites

Floor Plan



THIS SUITE IS SITUATED ABOVE THE ARCH OF THE ROYAL TOWERS
PALM ISLAND

The Underwater Suites (165sqm)

At a Glance

- Two Underwater Suites
- Suites cover three floors
- Living room view overlooks Ambassador Lagoon
- Bedroom/bathroom floor to ceiling windows looking directly into Ambassador Lagoon
- Private elevator
- 24-hour dedicated butler
- Butlers pantry
- Hallway and half bathroom
- Large living room
- Separate TV room/Majlis



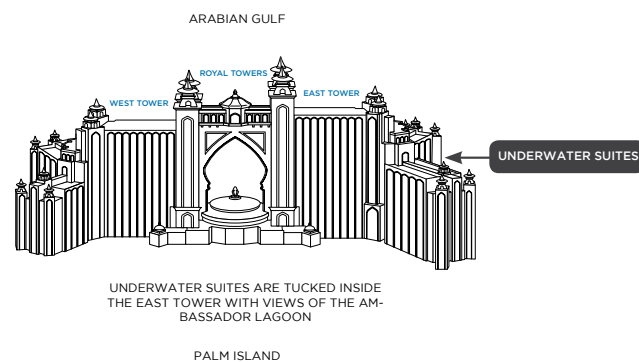
1ST FLOOR



2ND FLOOR



3RD FLOOR

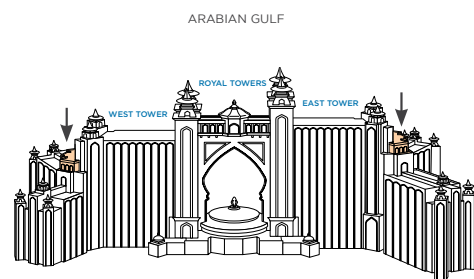


Grand Atlantis Suites (429sqm)

At a Glance

- Two Grand Atlantis Suites
- Balcony (246sqm) stretching three corners offering unique views of Palm Island and Arabian Sea
- Grand lobby
- Corridor entrance
- Fully equipped kitchen
- 24-hour dedicated butler
- Dining table seating 10
- Hallway and half bathroom
- Large living room
- Master bedroom
- Luxurious en-suite his and hers bathrooms with jetted tubs
- Guest accommodation
- Interconnecting room
- Part of the seven Super Suites

Floor Plan

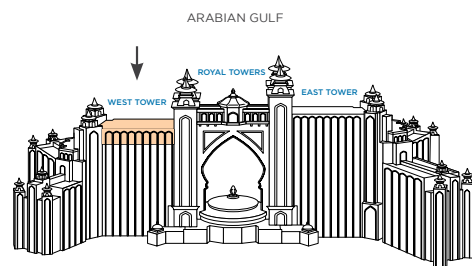


LOCATED ON THE 15TH FLOOR WEST
TOWER AND 18TH EAST TOWER
PALM ISLAND

Presidential Suites (220sqm)

At a Glance

- Two Presidential Suites
- 22sqm stretch of balcony with views of the Palm Island
- Sun loungers, table and chairs for outdoor dining
- Dining table seating eight
- 24-hour dedicated butler
- Butlers pantry
- Hallway and half bathroom
- Large living room
- Master bedroom
- Luxurious en-suite his and hers bathrooms with jetted tubs
- Interconnecting room
- Part of the seven Super Suites



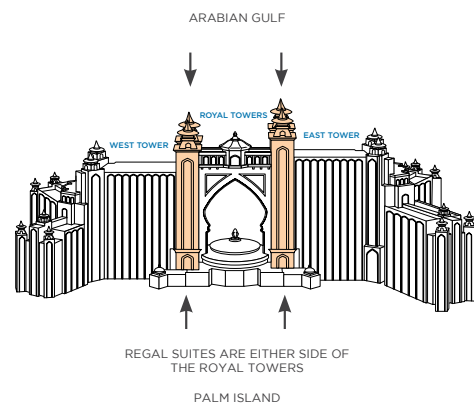
SITUATED ON THE 18 AND 19 FLOOR
IN THE WEST TOWER
PALM ISLAND

Regal Suites (164sqm)

At a Glance

- Balcony with chairs and sun loungers
- Spacious living and dining area
- Master bedroom
- Majlis in the bedroom
- Luxurious double vanity bathroom with large oval free standing bath
- Office area with partition
- Private pantry
- Separate cloakroom
- Interconnecting room

Floor Plan



Terrace Suites (94sqm)

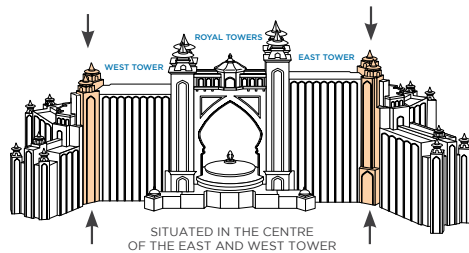
At a Glance

- French balcony with seating
- Luxurious double vanity bathroom with large oval free standing bath
- Spacious living room
- Separate cloakroom
- Interconnecting room
- Tea/coffee maker

Floor Plan



ARABIAN GULF



SITUATED IN THE CENTRE
OF THE EAST AND WEST TOWER

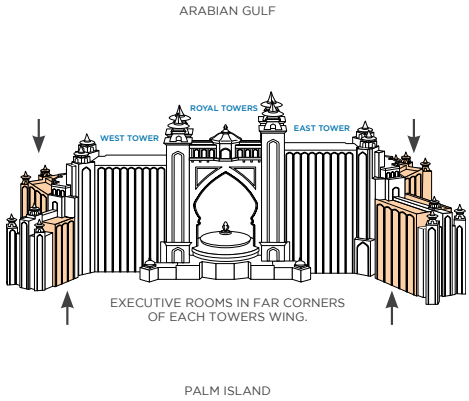
PALM ISLAND

Executive Suites (101sqm)

At a Glance

- French balcony with seating
- Master bedroom
- Luxurious double vanity bathroom with large oval free standing bath
- Spacious living room
- Dining table seating four
- Separate cloakroom
- Interconnecting room

Floor Plan



ATLANTIS
THE PALM, DUBAI

atlantisthepalm.com

For event enquiries and reservations email atlantisevents@atlantisthepalm.com or atlantisgroups@atlantisthepalm.com